



eclipsehospitality

Casegoods | Soft Seating
FOR HOTELIERS, BY HOTELIERS



about ECLIPSE HOSPITALITY

Eclipse Hospitality provides superior quality hotel furniture with stylish designs and creative solutions to meet the timeline demands of hoteliers.

Born out of a need to source quality hotel furniture that aligns with hoteliers' renovation/build timelines in 2008, Eclipse Hospitality provides our clients and design professionals with the **most versatile, custom-crafted casegoods and upholstered seating** for hotel guestrooms and public spaces throughout North America.



Homewood Suites
West Chester,
Ohio



Hyatt Place
Downtown
Edmonton,
Alberta





how WE STARTED

As hotel owners and operators ourselves of various franchises, we personally saw the challenges in procuring furniture that met our quality standards and came in within our timeline and budget demands.

This led us on our mission to help fellow hoteliers with one of their largest expenditures for their property--high quality furniture, provided in a timely fashion, and at a competitive price.



Hotel Shattuck Plaza, Berkeley, CA



Sheraton Pittsburgh PA

where we are TODAY

After years of testing our factories to ensure products that met our highest standards for quality and specifications...

AND, While earning a reputation with franchise owners as a leading furniture provider with unrivaled customer service...



eclipsehospitality

Eclipse Hospitality took a natural leap to working with hospitality designers, architects, and procurement firms

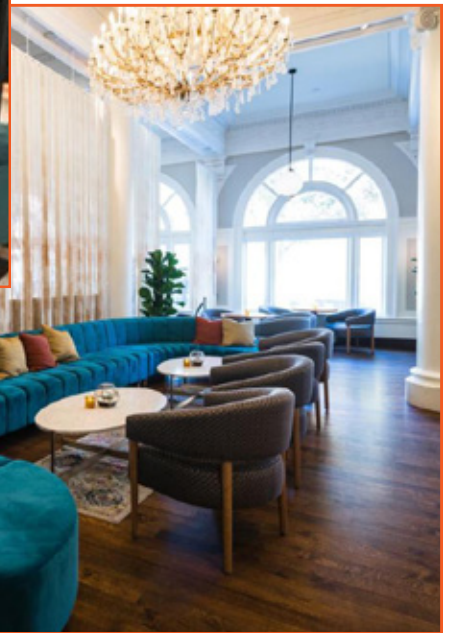


what SETS US APART from others?

- Hotel Operations Experience + Manufacturing Expertise
- Collective 90+ Years of Experience
- Custom Design Capability
- Brand Approved Programs
- Global Logistics Management
- Eclipse Personnel at Overseas Factories
- Commit with Confidence!



Hotel Shattuck Plaza,
Berkeley, CA



Radisson Blu, Pittsburgh, PA



Tuxson Hotel - Marriott Dream,
Tucson, AZ



Hyatt Place, Edmonton West, Alberta



Homewood Suites, Westchester, OH



PUBLIC SPACE
seating & furniture



leadership TEAM

○ **Anand Patel, Principal** Anand founded Eclipse Hospitality in 2000 while visiting Asia and procuring casegoods and seating for his own hotels at Landmark Hospitality LLC. Anand's focused vision, superior management team, committed values, and innovative leadership assure that Eclipse continues to reach superior levels of performance, while maintaining its entrepreneurial and service oriented culture.



○ **Chuck Fries, Director, Operations** Chuck is an accomplished Global Supply Chain Executive with 30+ years of manufacturing, distribution, and service in diverse industries and facilities worldwide. He helped companies including IBM, Motorola, HP, Michelin Tire, Fujitsu, Intel - and now Eclipse - build top quality relationships that help us grow efficiently and ensure our customers an excellent Eclipse experience.



○ **Anthony Pena, Director, Production & Logistics** Since 2000, Anthony has worked directly with factory owners and production managers to get the best quality product contracted at the best price. Anthony's deep expertise in global logistics provides leadership, vision, direction, and guidance to ensure cost reduction, schedule performance, quality and compliance are met and exceeded.



○ **Andy Schaidler, Director, Field Sales & Business Development** Andy works nationwide from his offices in Palm Springs, CA and Grand Rapids, MI as a National Business Development/Sales Manager to the contract-hospitality industry. He brings 25+ years of furnishings & lighting experience and relationships in architecture & interior design, purchasing, hospitality management, hospitality brands, and independent sales reps across North America. Andy served for years on the international board of NEWH and is a 30 year member of the IESNA.



○ **William "Bill" Fee, Director, Quality Assurance** Bill has been leading sales efforts for Eclipse Hospitality since 2000. Bill has worked in the hospitality industry for over 40 years. He has spent years cultivating relationships with various brands including Marriott, Hilton, and Best Western. Bill's industry and manufacturing knowledge lend assurance in quality and product for the North American Market.



frequently-asked **QUESTIONS**

○ Why Eclipse?	<i>We are a small group of hospitality owners with extensive industry knowledge. We pride ourselves on the knowledge gained in this industry and the relationships to our factories to ensure our quality guidelines and timelines are met for each and every project.</i>
○ How long has Eclipse been in business?	<i>Eclipse was founded in 2008</i>
○ How many projects completed?	<i>Over 100 projects for flags under Hilton, Marriott, Hyatt, IHG, Choice, Best Western, Wyndham, independents, and more.</i>
○ Design options?	<i>In-grade and COM finish stains and laminates and hardware available for all casegoods; In-grade and COM fabrics and faux leathers for all softgoods. We have direct relationships with most major raw goods suppliers in North America and Asia.</i>
○ Factory locations?	<i>Experienced factories in China, Vietnam, and Malaysia, producing consistent and repeatable product of the highest quality.</i>
○ Production capacity?	<i>Each factory is capable of producing an average of 1,500 to 2,000 rooms per month.</i>
○ Minimum order?	<i>1 container. Approximately 30 guest rooms, or 100 mixed public space pieces.</i>
○ Model rooms?	<i>Model rooms are available at 3X production price plus freight, with a credit towards final order of same set.</i>
○ Lead times?	<i>Standard 10-12 weeks production after deposit up to 120 rooms; larger projects can be completed in phases to suit installation schedules. Shipping timeline 3 to 4 weeks based on project location</i>
○ Payment terms?	<i>50% deposit with balance + freight due prior to shipping.</i>
○ Quality control?	<i>Each factory has a full QC process for each department. Quality checks are done by onsite Eclipse employees in raw cutting, machining, finishing, and packaging.</i>
○ Project management?	<i>A U.S. based project lead collaborates with client, designer and factory personnel to enable transparency and proactive communication to ensure project success.</i>
○ Custom design capability?	<i>Each project we do is custom work. Even the most basic set of furniture is still built to specification one project at a time. Each project is quoted based on the specifications given and materials used for the hotel.</i>
○ How do we instill confidence in our stakeholders?	<i>Our large portfolio of successfully completed projects gives you the assurance to partner with Eclipse to provide competitive bids and exceptional performance on every job. We also provide a 2 year prorated warranty to our clients.</i>
○ Are you approved by most major brands?	<i>Our project portfolio is a testament to the numerous and various brands we work with. Many designers we work with have relationships with the Brand to obtain additional individual approvals if required. We also understand the design review and approval process and can assist as needed.</i>

client PARTNERS

DESIGNERS, ARCHITECTS, PURCHASING & DEVELOPMENT FIRMS

AJC Design, New York, New York
Algiere Construction Services, Plano TX
Allen+Philp Partners, Scottsdale, AZ
Apex Studios, Chester, VA
Barrett Design Studio, Jackson, MS
BBL Construction Services, Albany NY
BPR Properties, Palo Alto, CA
Carver & Associates, Atlanta, GA
Commercial ID Solutions, Phoenix AZ
Design Elim, La Mirada, CA
Driftwood Hospitality, Palm Beach, FL
FORS architecture+interiors, Tucson, AZ
Gensler, Houston, TX
Hall Equities/ZMC Hotels, Walnut Creek, CA
Hersha Purchasing, Harrisburg, PA
HPGI, Walnut Creek CA
HS Design and Supply, San Diego, CA
Interplan Design, San Clemente, CA
JMG Design Studio, Irvine, CA
K2 Design, Scottsdale AZ
Kieffer Design Group, Boise, ID
Kitibiyashi Designs, San Diego CA
Level 3 Design Group, Los Angeles, CA
MCS Architects, LLC, Houston, TX
Mendil+Meyer Design Studio, Scottsdale, AZ
Muse Designs, Charlotte NC
R R Williams & Associates, Houston, TX
Raymond Management, Sacramento, CA
Studio 11 Designs, St. Louis
Western Contract Furnishings, Chandler, AZ

BOUTIQUE & LUXURY PROJECTS

Bermuda Dunes Country Club, Palm Springs CA
Blue Mountain Inn, Ontario, Canada
Bodega Bay Inn & Suites, Bodega Bay, CA
The Charles Hotel, Cambridge, MA
Dana Point Marina, Dana Point, CA
Forum Inn, Ocean City NJ
Houstonian Hotel, Club & Spa, Houston, TX
Hyatt Place West, Edmonton
LA Costa Resort, Carlsbad, CA
Orlando World Center, Orlando, FL



Renaissance, Washington, DC Downtown
Scarborough Inn, Ocean City NJ
Shattuck Hotel Plaza - Zino, Berkeley, CA
Steele Canyon Country Club, Jamul CA
WaterView Casino & Hotel, Vicksburg, MS

HILTON HOTELS

DoubleTree by Hilton, Seattle, WA
The "ED" A Curio Collection, Edmonton
Embassy Suites, Covington, KY
Embassy Suites, St. Louis, MS
Embassy Suites, St Paul, MN
Hampton Inn, Surprise, AZ
Hampton Inn, Houston Airport, TX
Hampton Inn & Suites, Amarillo West, TX
Hampton Inn, Hammond, IN
Hampton Inn, Kearny Mesa, CA
Hampton Inn, Scottsdale @Shea, AZ
Hampton Inn, Anthem (Phoenix), AZ
Hampton Inn, Peoria (Phoenix), AZ
Hampton Inn, Goldsboro, NC
Hampton Inn, Jackson-Coliseum, MS
Hampton Inn & Suites, Turlock, CA
Hampton Inn, Portland, OR
Hampton Inn & Suites, San Jose, CA
Hampton Inn & Suites, Farmington, NM
Hampton Inn, Sierra Vista, AZ
Hampton Inn & Suites, Aberdeen, SD
Hampton Inn, Ashland, VA
Hilton Garden Inn, Chandler AZ
Hilton Garden Inn, Idaho Falls, ID
Hilton, Toronto
Homewood Suites, Albuquerque, NM
Homewood Suites, West Chester, OH
Homewood Suites, Concord, NC
Homewood Suites, Schenectady, NY

MARRIOTT INTERNATIONAL

Tuxon, A Marriott Design Hotel, Tucson AZ
Aloft Hotel Portland, OR
Element by Westin Tukwilla WA
Sheraton, Calgary
Sheraton, Framingham, MA
Sheraton, New Castle, DE
Sheraton, New Orleans, LA

Sheraton, Oklahoma City, OK
MARRIOTT (continued)

Sheraton, Pittsburgh
Sheraton, Portland, OR
Sheraton, San Diego, CA
Sheraton, San Gabriel Hotel, CA
Sheraton, Saskatoon
Sheraton, Toronto Airport
Sheraton, Universal Studios, CA
Sheraton, Wilmington DE
Westin, Tabor Center Hotel, CA

CHOICE HOTELS

Comfort Suites Benton Harbor, MI
Comfort Suites, Bluffton, SC
Comfort Suites, Watsonville, CA
Comfort Inn & Suites Sacramento (Univ Area)
Comfort Suites, Gallup, NM
Comfort Inn, Casa Grande, AZ
Quality Inn, San Jose, CA
Quality Inn, Sierra Vista, AZ
Quality Inn, Charleston, WV
Rodeway Inn, Reading, PA

INTERCONTINENTAL HOTELS

Holiday Inn, Amarillo (West), TX
Holiday Inn, Trophy Club, TX
Holiday Inn Express, Jackson, CA
Holiday Inn Express, Bloomington, IL
Holiday Inn Express, Ralston, NE
Holiday Inn Express, Tombstone, AZ

BEST WESTERN

BW Americana, Dinuba, CA
BW Superstition Springs, Mesa, AZ
BW PLUS, Mesa, AZ
BW PLUS, Henderson, NV
BW Sonora Inn & Suites, Nogales, AZ
BW Edgewater Resort, Sandpoint, ID

WYNDHAM

Days Inn, Fremont, CA
La Quinta Inn & Suites, Searcy, AR
Ramada Plaza Disneyland, Anaheim, CA

With our time-tested knowledge, experience, and commitment to service, our team is equipped to provide the insight and approach to meet the demands of every project



eclipsehospitality

SALES INFO & INQUIRIES

Phone: 702-344-0080

Email: sales@eclipsehospitality.com

www.eclipsehospitality.com

LAS VEGAS

8275 S. Eastern Avenue
Suite 200
Las Vegas, NV 89123

PHOENIX

4802 East Ray Road
#23-225
Phoenix, AZ 85044

ASIA-PACIFIC

Room 406, 7TH Bldg, Ming Cheng
Yangguang Court, Shaoxing,
Zhejiang, China, 312000